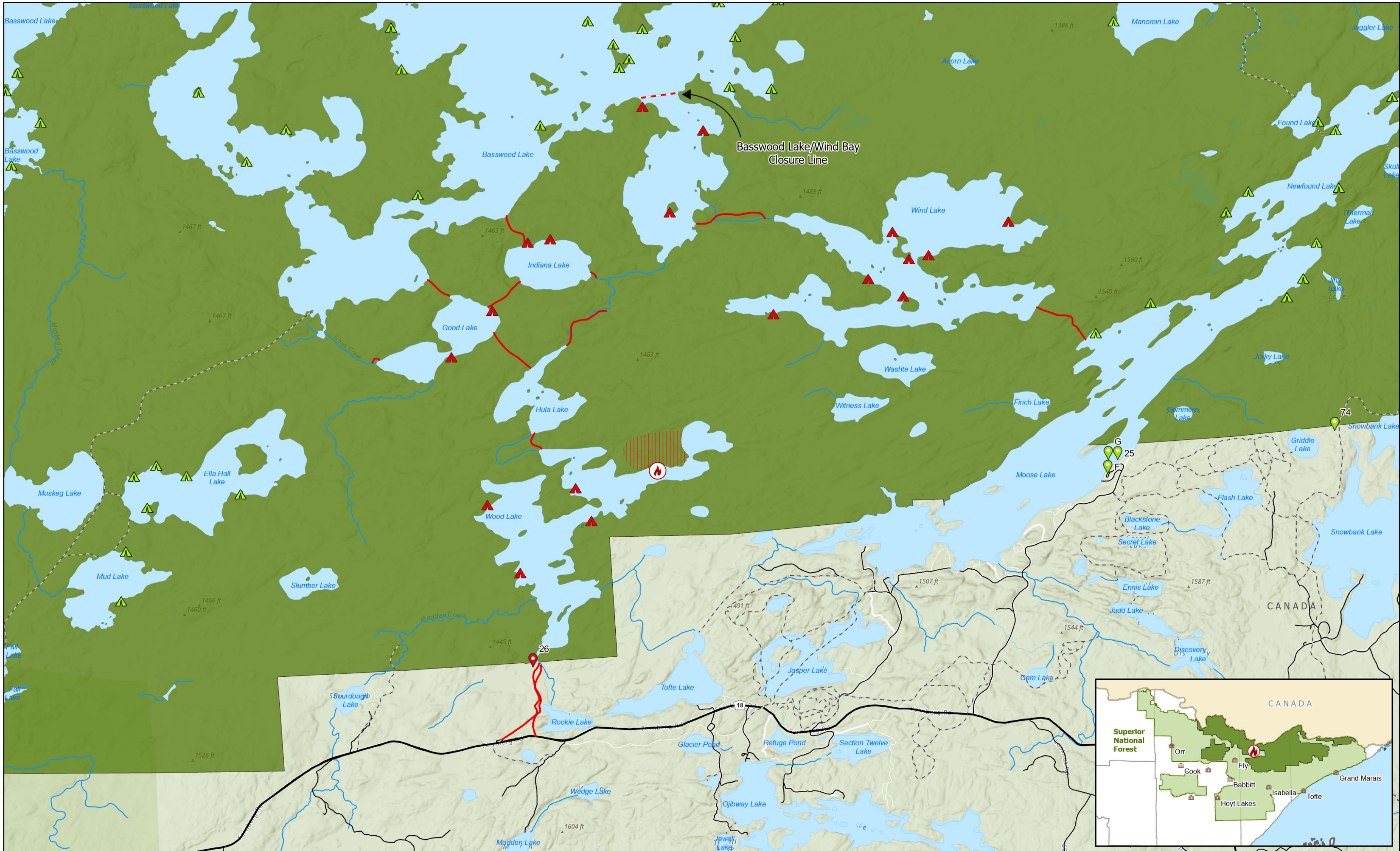




Wood Lake Fire Closures, FS Order #09-09-24-07, Exhibit B

Eastern Region | Superior National Forest



0 0.5 1 2 Miles

NAD 1983 UTM Zone 15N  
Transverse Mercator

- Initial Fire Point
- Open BWCAW Entry Points
- Open BWCAW Campsite
- General Fire Area
- Superior National Forest Boundary
- Closed BWCAW Entry Points
- Closed BWCAW Campsite
- Portage/Trail Closures
- Trail/Portage
- Existing Road
- BWCA Boundary

*This product is reproduced from geospatial information prepared by the USDA Forest Service. Geospatial information and GIS product accuracy may vary. Using GIS products for purposes other than those for which they were created may yield inaccurate or misleading results. USDA Forest Service reserves the right to correct, update, modify or replace GIS products without notification*